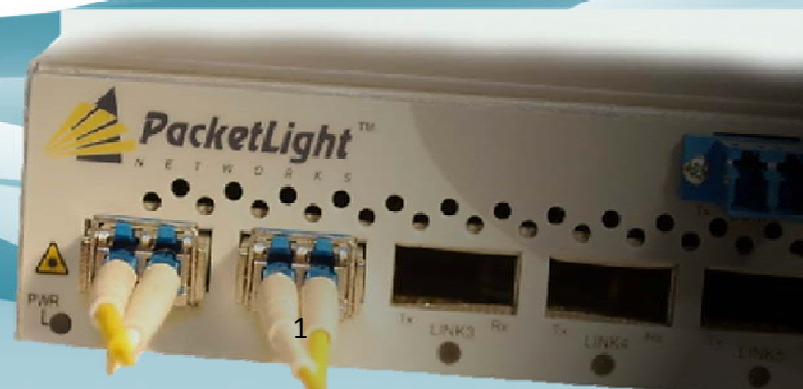




## COMPLETE WDM AND OTN SOLUTIONS

COMPLETE WDM AND OTN SOLUTIONS

[www.pit.or.kr](http://www.pit.or.kr)



## The PacketLight Differentiators

**Compact 1U Solutions**

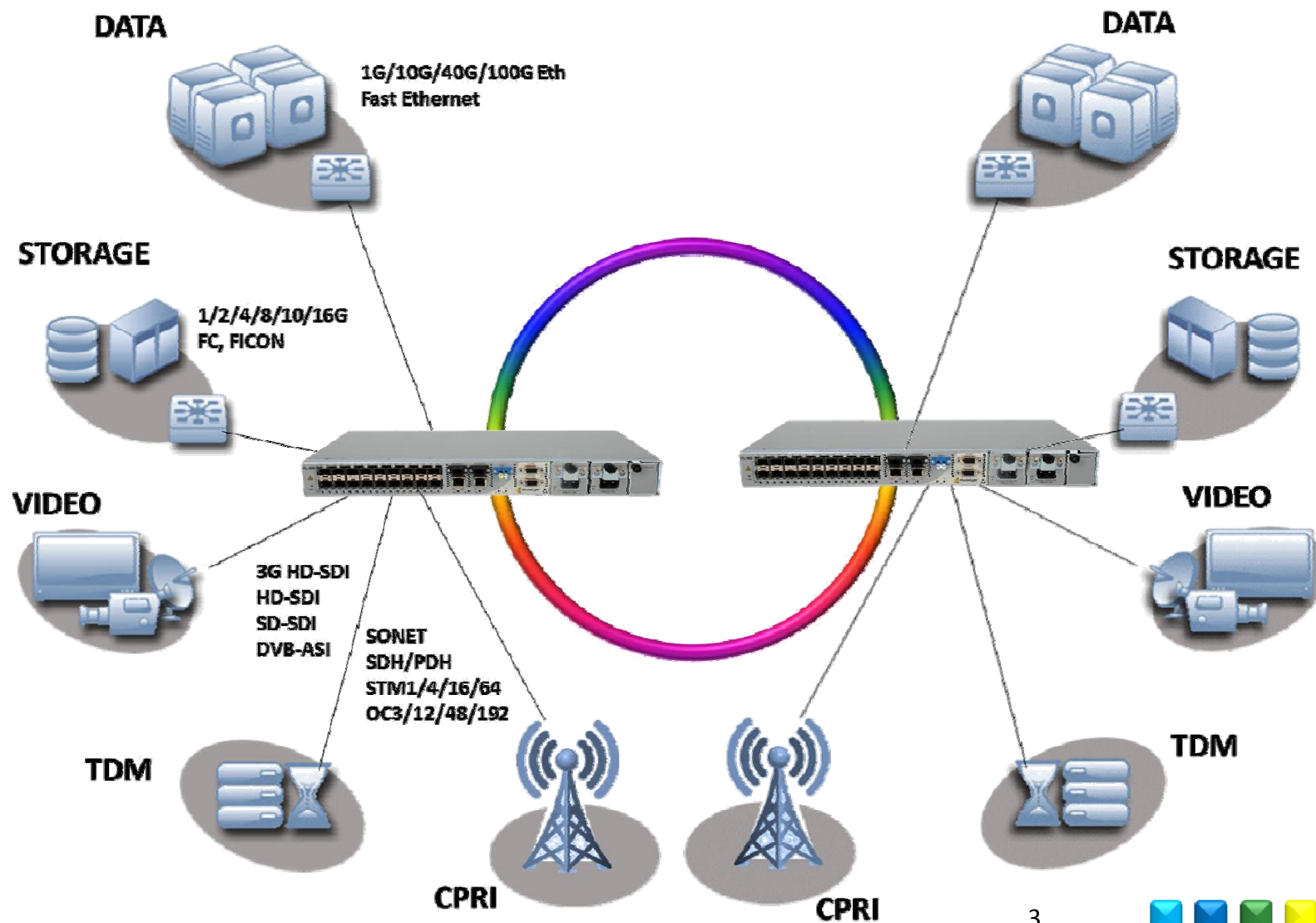
**All the features of a carrier class  
WDM product**

**Simple configuration Process**

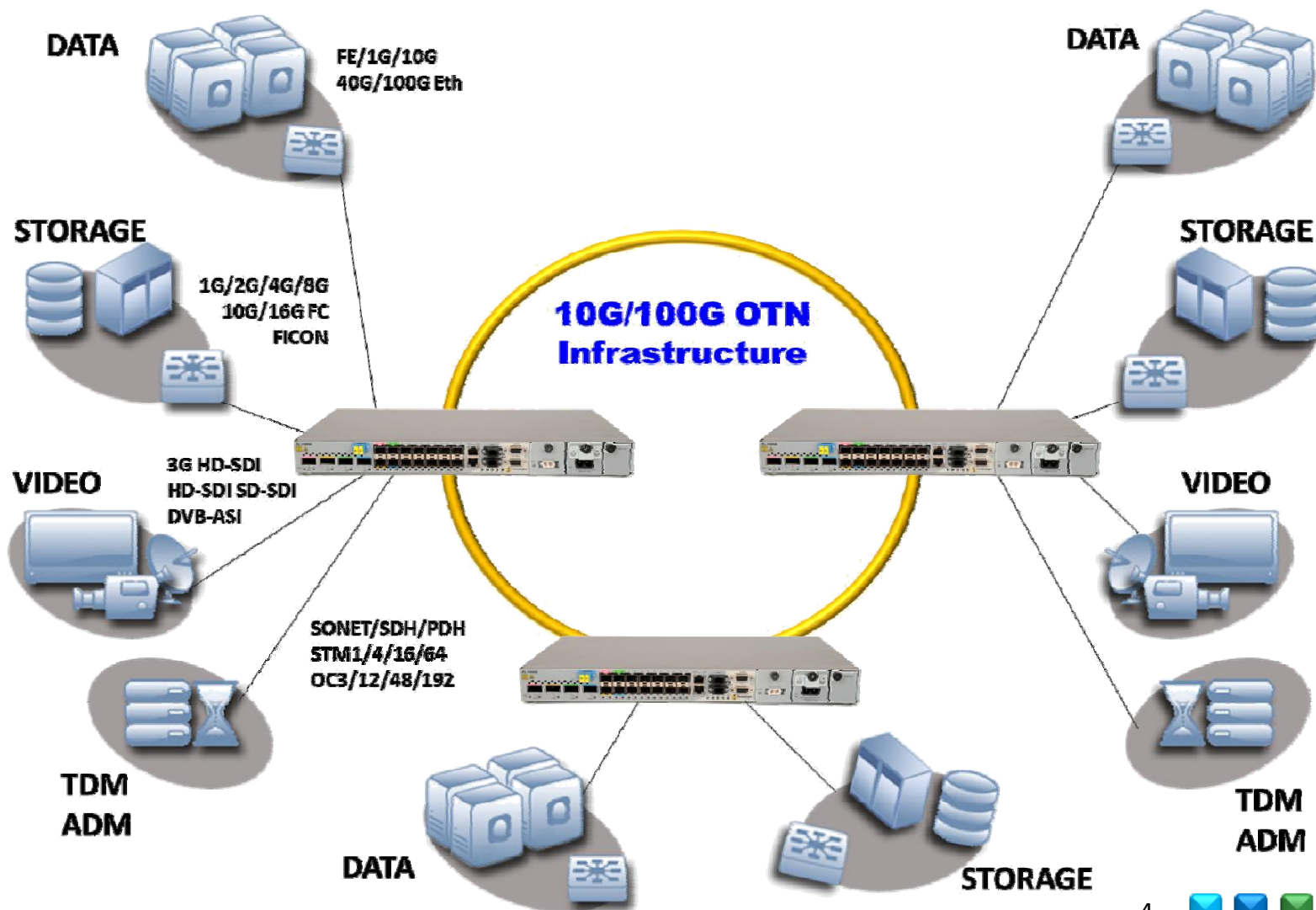
**Cost Effective Solution for CPE**

**Transports 2Mbps to 100Gbps  
Up to 88 Channels**

## Building Agile CWDM, DWDM Infrastructure



## OTN Solution for Long-Haul, Metro and Access





## PacketLight Product Portfolio

Transponders

PL-1000TE: 8 x 100M-16G services



PL-1000E: 4 x 8G/10G +4 x sub 10G



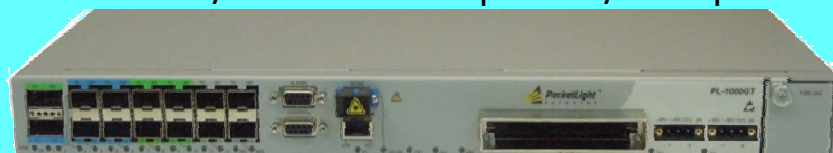
PL-1000TN- 6 x 8G/10G OTN Services



PL-1000: 4 x 10G Services



PL-1000GM/GT- 100G Muxponder/Transponder



PL-400: 8 x Sub 10G Services



PL-2000- Up to 16 any service Muxponder



PL-1000EM: 10 x GbE Muxponder



PL-1000IL: Optical Amplifiers



PL-1000RO: WSS ROADM



PL-300: Passive Solutions



OTN Solutions

Muxponders

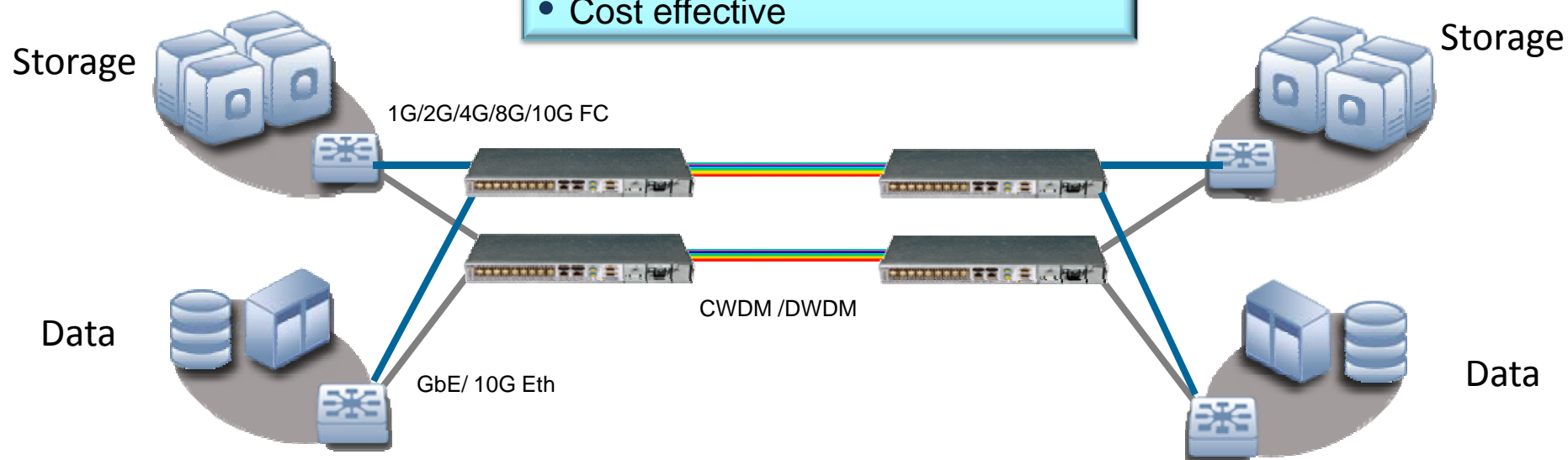
Infrastructure

## Business Continuity, DR Solutions

**Market Segment-**  
**Insurance, Finance, Universities, Health Care**

**Perfect for Business Continuity,  
and Disaster Recovery**

- High Capacity
- Low latency & power consumption
- Multi Service mix
- Ease of configuration
- Cost effective



## Long Haul Data Center Connectivity

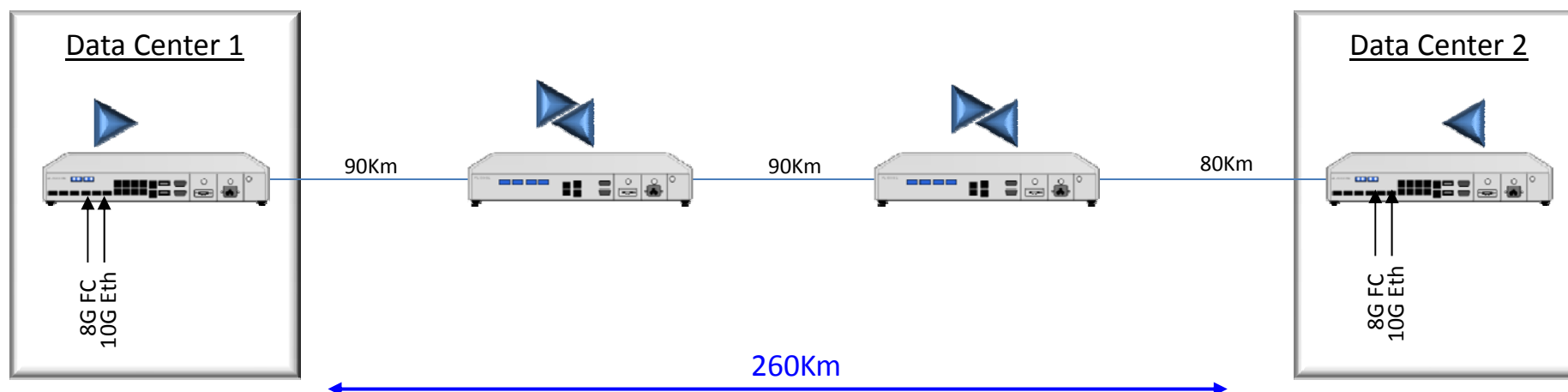
### Market Segment- Insurance, Finance, Universities, Health Care

#### Requirements:

- Distance 260Km
- Services: 1 x 10G Eth  
1x 8G FC
- expansion to 6 Services

#### Long Distance Data Center Connectivity

- Manageable Optical Layer
- Simplicity of operation
- Cost effective (CAPEX/OPEX)
- Small foot print integrated solution
- Agnostic to client 3<sup>rd</sup> party equipment



## PacketLight Advantages

### The Technology

- State of the art WDM technology
- All features required by a Carrier Grade WDM Solution
- All building blocks for any WDM solution
- Adding features to customer's needs

### Size

- Save Rack Space
- Lower power consumption

### Ease of Use

- No need for a WDM expert
- Easy to Install maintain and configure

### Support

- PacketLight's team provides all the support from RFP to post sale support
- Post sales and technical support 24x7

### Fast ROI

- Enable to grow with future needs in min initial investment
- Deploy high end WDM network tailored for your needs at cost effective way







**Thank you!**

hyuk@pit.or.kr